

SECTOR

REF - P. 68

DIMENSIONS

700 x 28

700 x 32

SPECIFICATIONS

●●●●●●●●	Comfort
●●●●●●●●	Performance
●●●●●●●●	Grip
●●●●●●●●	Durability
●●●●●●●●	Puncture resistance
●●●●●●●●	Lightness

From
290 GR

CONCEPTS

**TUBELESS
READY**

HARDSKIN

STRENGTHS

• Designed with Tubeless Ready technology (anti-puncture sealant mandatory for airtightness) • Gives priority to comfort, lightness and resistance. Dual compound to optimize the grip/durability compromise • Designed for competition and long-distance training on difficult roads • The top tire to ride on cobbles • Can be used for Gravel rides

IN PRACTICE

The Sector is the reference tire for challenging roads. Initially developed with our professional racers for the Spring classic races, this tire is the reason why the Tubeless Ready design was developed. Its lateral sheared profile gives satisfaction to the most aggressive riders in curves.

While its tread in association with an effective compound makes it a fast and rolling tire.

The 700x28 version in association with the Road Tubeless Ready design gives a feeling of comfort and incomparable grip.

The 700x32 one will give you the opportunity to ride at the frontier of Gravel tracks and wide open spaces.



CONCEPTS



TUBETYPE

DESCRIPTION

- Tube type tire



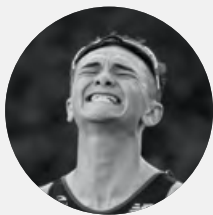
TUBELESS READY

DESCRIPTION

- Tubeless tire whose airtightness is guaranteed by Hutchinson Protect'Air Max latex sealant

BENEFITS

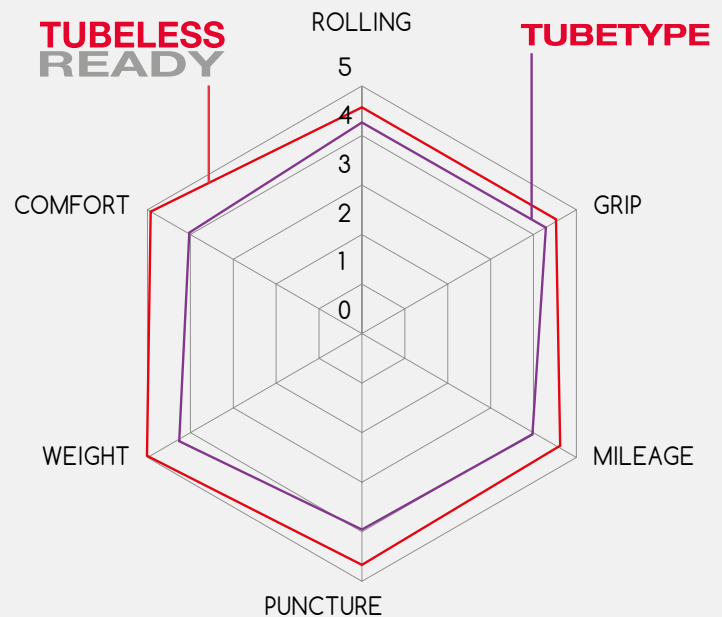
- Increased grip thanks to a greater deformation of the tire in curves.
- Improved performance due to the no internal frictions with an inner tube.
- Compatible with and without inner tube.
- Easy to mount.
- Lightness: from 240gr i.e. 20% lighter than a tire + inner tube kit.
- Puncture resistance: the absence of an inner tube eliminates the risk of punctures due to impact/pinch or burst. The Hutchinson latex sealant also refills micro-perforations.
- Comfort: Possibility to ride at lower pressure to better put up with the road's defects.



ADVICE FROM A PRO

Alex YEE - SHORT-DISTANCE TRIATHLETE
 2021 OLYMPICS SILVER MEDALIST/
 2021 OLYMPICS MIXED RELAY CHAMPION

« I have been using the Hutchinson Tubeless tires for many years to train and ride miles. Reliability and comfort have always been the strengths of Tubeless tires. The weight and ease of mounting of the new Tubeless Ready have further improved the Tubeless concept. It's the ideal weapon for fondo riders! And since the end of my career, I can say that I am a fondo rider! »





REINFORCEMENTS



HARDSKIN

DESCRIPTION

- Reinforcement to avoid punctures, Hardskin fabric placed bead-to-bead and under the tread.

BENEFITS

- Safety: Coming from the MTB, this technology protects sidewalls from cuts and improves puncture resistance.



ARAMID PRO TECH

DESCRIPTION

- 100% Aramid puncture reinforcement under the tread.

BENEFITS

- Safety: 50% improvement in puncture resistance.
- Performance: Adds puncture resistance without adding significant weight.



REINFORCED

DESCRIPTION

- 100% polyamide puncture reinforcement under the tread.

BENEFITS

- Safety: Improved 25% puncture resistance.
- Performance: Adds puncture resistance without adding significant weight.

FROM OUR LABORATORY TO YOURS



3 years of development and tests have been necessary to obtain the benchmark compound. Associated with the best casing and reinforcement, the ElevenSTORM® compound explores the most accomplished performance in terms of rolling, grip and mileage. Tested and approved in independent laboratories.

ROAD TRIATHLON



**FUSION 5
PERFORMANCE**
P.14



**FUSION 5
ALL SEASON**
P.15



SECTOR
P.17



CHALLENGER
P.18



NITRO 2
P.19



ROAD - TRIATHLON

NEW	MADE IN FRANCE	PRODUCT NAME	DIMENSIONS	ETRTO	TECHNOLOGY	FB / WB	TT / TL	REINFORCEMENT	COMPOUND	COLOR	TPI	WEIGHT (G) +/-7%	ITEM CODE	PAGE
	FR	FUSION 5 Performance	700 x 25	25-622	Tubetype	FB	TT	KEVLAR ProTech	ElevenSTORM®	Black	127	200	PV527621	14
	FR	FUSION 5 Performance	700 x 25	25-622	Tubeless Ready	FB	TT/TL	Hardskin	ElevenSTORM®	Black	127	245	PV527721	14
	FR	FUSION 5 Performance	700 x 25	25-622	Tubetype	FB	TT	KEVLAR ProTech	ElevenSTORM®	Black/ Tan Sidewalls	127	315	PV529041	14
	FR	FUSION 5 Performance	700 x 28	28-622	Tubetype	FB	TT	KEVLAR ProTech	ElevenSTORM®	Black	127	220	PV527691	14
	FR	FUSION 5 Performance	700 x 28	28-622	Tubeless Ready	FB	TT/TL	Hardskin	ElevenSTORM®	Black	127	270	PV527951	14
	FR	FUSION 5 Performance	700 x 30	30-622	Tubeless Ready	FB	TT/TL	Hardskin	ElevenSTORM®	Black	127	296	PV528791	14
	FR	FUSION 5 All Season	700 x 23	23-622	Tubetype	FB	TT	KEVLAR ProTech	ElevenSTORM®	Black	127	200	PV527561	15
	FR	FUSION 5 All Season	700 x 25	25-622	Tubetype	FB	TT	KEVLAR ProTech	ElevenSTORM®	Black	127	210	PV527651	15
	FR	FUSION 5 All Season	700 x 25	25-622	Tubeless Ready	FB	TT/TL	Hardskin	ElevenSTORM®	Black	127	260	PV527731	15
	FR	FUSION 5 All Season	700 x 28	28-622	Tubetype	FB	TT	KEVLAR ProTech	ElevenSTORM®	Black	127	230	PV527701	15
	FR	FUSION 5 All Season	700 x 28	28-622	Tubeless Ready	FB	TT/TL	Hardskin	ElevenSTORM®	Black	127	285	PV527961	15
	FR	SECTOR	700 x 28	28-622	Tubeless Ready	FB	TT/TL	-	Bi-Compound	Black	127	290	PV529681	17
	FR	SECTOR	700 x 32	32-622	Tubeless Ready	FB	TT/TL	Hardskin	Bi-Compound	Black	127	315	PV526311	17
NEW		CHALLENGER	700 x 25	25-622	Tubetype	FB	TT	Reinforced	Bi-Compound	Black	66	255	PV703911	18
NEW		CHALLENGER	700 x 28	28-622	Tubetype	FB	TT	Reinforced	Bi-Compound	Black	66	300	PV703921	18
NEW		CHALLENGER	700 x 28	28-622	Tubetype	FB	TT	Reinforced	Bi-Compound	Black/ Tan Sidewalls	66	300	PV704201	18
NEW		CHALLENGER	700 x 30	30-622	Tubetype	FB	TT	Reinforced	Bi-Compound	Black	66	320	PV704051	18
		NITRO 2	700 x 23	23-622	Tubetype	WB	TT	-	Mono-compound	Black	33	320	PV699755	19
		NITRO 2	700 x 25	25-622	Tubetype	WB	TT	-	Mono-compound	Black	33	380	PV700365	19
		NITRO 2	700 x 28	28-622	Tubetype	WB	TT	-	Mono-compound	Black	33	380	PV700375	19
		NITRO 2	700 x 28	28-622	Tubetype	WB	TT	-	Mono-compound	Black/ Tan Sidewalls	33	380	PV701965	19
		NITRO 2	700 x 25	25-622	Tubetype	FB	TT	-	Mono-compound	Black	66	350	PV702571	19
		NITRO 2	700 x 28	28-622	Tubetype	FB	TT	-	Mono-compound	Black	66	350	PV702581	19
		NITRO 2	700 x 28	28-622	Tubetype	FB	TT	-	Mono-compound	Black/ Tan Sidewalls	66	350	PV704061	19